

FD-55111-B

4

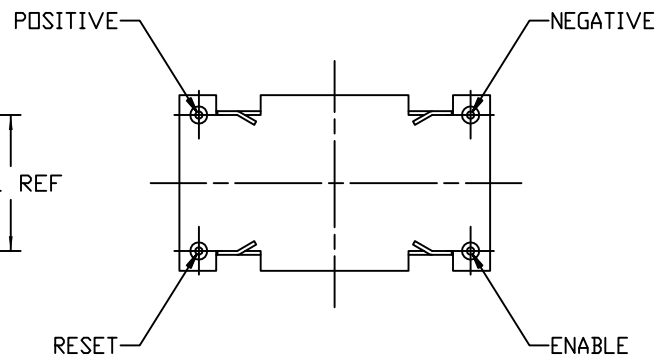
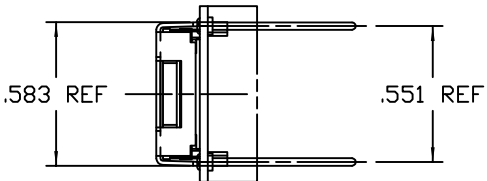
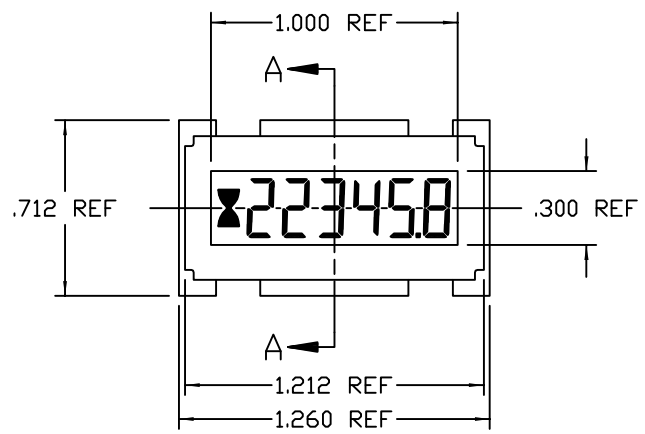
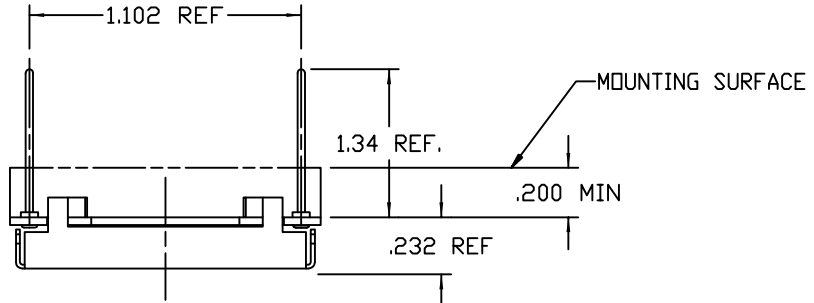
3

2

1

HONEYWELL PART NUMBER
98755

REV	DOCUMENT	CHANGED BY	CHECK
A	0019892	SK 29MAR06	AS



- NOTES:
- CAUTION, MODULE SUPPLIED WITH CRITICAL COMPONENTS EXPOSED. CUSTOMER MUST PROVIDE ADEQUATE PROTECTION FOR INTENDED APPLICATION.
 - PRODUCT CONTENT MUST COMPLY WITH THE REQUIREMENTS OF THE CURRENT RoHS DIRECTIVE.

DESIGN UNITS:	INCH
TOLERANCES UNLESS NOTED:	
NO PLACE	X ± 0.400
ONE PLACE	.X ± 0.030
TWO PLACE	.XX ± 0.015
THREE PLACE	.XXX ± 0.005
FOUR PLACE	.XXXX ± 0.0005
ANGLES	X ± 3

THIRD ANGLE PROJECTION

DRAWN	SK	29MAR06
CHECK	AS	29MAR06
THIS DRAWING COVERS A PROPRIETARY ITEM AND IS THE PROPERTY OF HONEYWELL. THIS DRAWING IS NOT TO BE COPIED OR USED WITHOUT THE PERMISSION OF HONEYWELL.		
INTERPRET PER ASME Y14.5M-1994 OTHER HONEYWELL ENGINEERING STANDARDS MAY APPLY		
AUTOCAD		2D

SIM. TD: 98750			
CUSTOMER PRINT			
Honeywell			
TITLE		LCD HOURMETER MODULE W/ENABLE & RESET (9-64 V)	
SIZE	TYPE	DRAWING NAME	REV
B	I	98755	A
SCALE	2:1	SHEET	1 OF 1

4

3

2

1